

Rajomon

羅城門

Ryuji Kunimatsu (2002)

Flute

senza tempo

mf *mp* *mf* *mf*

(Improvise)
1/4tone down

1/4tone up

2nd

cantabile

mp

p *rit.*

accel.

cantabile

mp

rit.

accel.

Rajomon

senza tempo

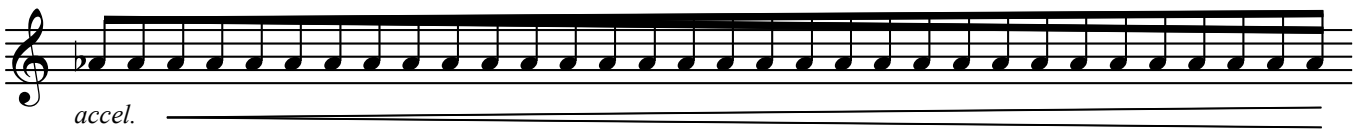
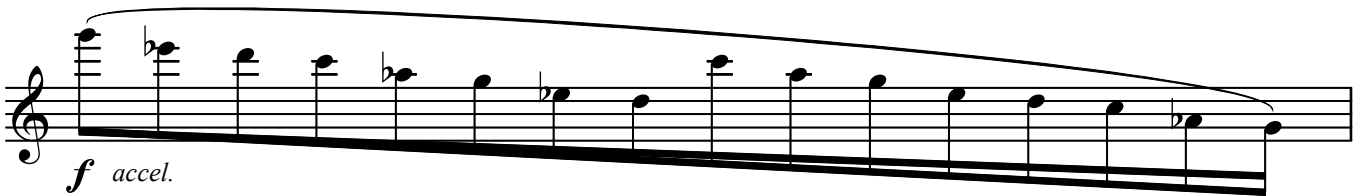
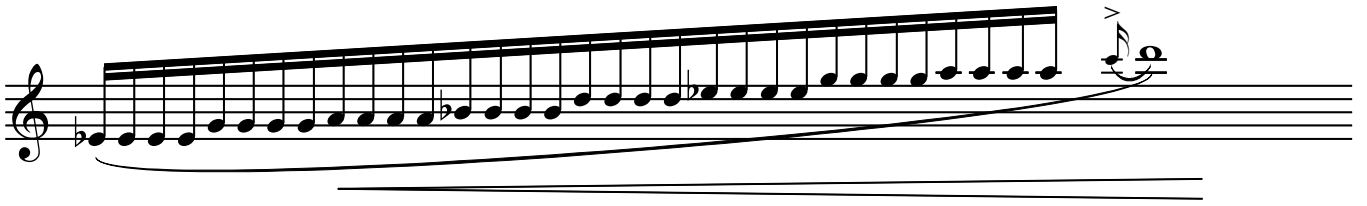
cantabile

The musical score for 'Rajomon' is written on a single treble clef staff. It begins with a dynamic marking of *p* and a hairpin indicating a crescendo. The first line contains several measures with long, sweeping melodic lines. The second line features a series of eighth notes, with markings for *accel.* and *rall.* below. The third line starts with a dynamic marking of *mp* and includes a hairpin for a crescendo. The fourth line contains a sequence of eighth notes with a *rall.* marking. The fifth line begins with a dynamic marking of *mp* and a *rit.* marking. The sixth line starts with a dynamic marking of *mf*, includes a *1/4tone* interval marking with a double-headed arrow, and features markings for *accel.*, *rall.*, and *rit.*. The seventh line continues with a *mf* dynamic, *1/4tone* marking, and markings for *accel.* and *rall.*. The final line consists of a long, continuous melodic line starting with a *mf* dynamic and an *accel.* marking. The score concludes with a double bar line and a measure containing the number 6.

Rajomon

The musical score for 'Rajomon' consists of nine staves of music. The first staff begins with the instruction *cantabile* and a dynamic marking of *mf*. The second staff contains a five-note slur and a three-note slur. The third staff starts with *accel.* and a dynamic marking of *f*. The fourth staff features a five-note slur and a three-note slur. The fifth staff begins with *accel.* and a dynamic marking of *f*. The sixth staff includes a five-note slur, a three-note slur, and a dynamic marking of *rit.*. The seventh staff is marked *p* and *accel.*. The eighth staff is marked *f* and includes the instruction *Tonguing*. The ninth staff is a continuous eighth-note line.

Rajomon



Rajomon

A single musical staff in treble clef. It features a long, sweeping melodic line that starts on a low note, rises steadily to a peak, and then falls back down. The line is composed of many small notes, possibly sixteenth or thirty-second notes, creating a shimmering effect. It ends with a fermata.

A single musical staff in treble clef. The melodic line starts on a high note and descends steadily. It is marked with a forte *f* dynamic and an *accel.* (accelerando) instruction.

A single musical staff in treble clef. The melodic line starts on a low note and rises. It is marked with a forte *f* dynamic and a *cresc.* (crescendo) instruction. A bracket above the notes indicates a five-finger fingering.

A single musical staff in treble clef. The melodic line starts on a low note and rises. A bracket above the notes indicates a five-finger fingering.

A single musical staff in treble clef. It features a series of repeated notes, possibly sixteenth notes, with a *ff* (fortissimo) dynamic and a *rall.* (ritardando) instruction. The staff ends with a triplet of notes.

A single musical staff in treble clef. The melodic line starts on a low note and rises. It is marked with a piano *p* dynamic.

A single musical staff in treble clef. The melodic line starts on a high note and descends. It is marked with a mezzo-piano *mp* dynamic and a pianissimo *pp* dynamic.

A single musical staff in treble clef. The melodic line starts on a low note and rises. It is marked with the *cantabile* instruction and a mezzo-piano *mp* dynamic.

A single musical staff in treble clef. The melodic line starts on a low note and rises. It is marked with a piano *p* dynamic and a mezzo-forte *mf* dynamic. A bracket above the notes indicates a five-finger fingering.

